

# Better Training for Safer Food *Initiative*

## The Feed ban & ABP Regulation

Christophe Keppens & Neil Leach





European  
Commission

# BTSF System



European  
Commission

# TSE Prevention

SRM  
Removal

Feed  
Ban

ABP Regulation



European  
Commission

# B T S F A B P

# Two steps

The ABP producer

Categorisation by **known** risk

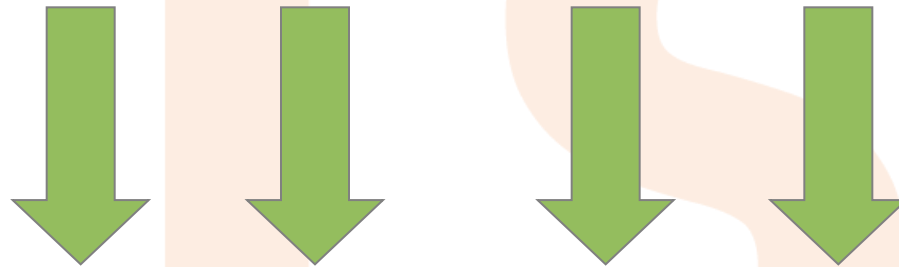


Send to destination safe for category

The ABP operator

# Requirements for ABP operator

Send to destination safe for category



**Register**

Registration  
unless approval

**Treat**

To deal with  
microbiological  
risks

**Check**

Own checks  
+ sometimes  
HACCP

**Trace**

Identification +  
Commercial  
document

Topics

- Introduction
- Food sector
- Animal by-products sector
- Feed sector

EU Member States



AT

Österreich



BE

Belgique/België Kypros/Cyprus



CY



CZ

Ceská Republika/Czech Republic



DE

Deutschland



DK

Danmark



EE

Eesti



EL

Ellás



ES

España



FI

Suomi



FR

France



HU

Magyarország



IE

Ireland



IT

Italia



LT

Lietuva



LU

Luxembourg



LV

Latvija



MT

Malta



NL

Nederland



PL

Polska



PT

Portugal



SE

Sverige



SI

Slovenija



SK

Slovensko



UK

UK, excl.  
Northern Ireland  
Northern Ireland



BG

Bulgaria



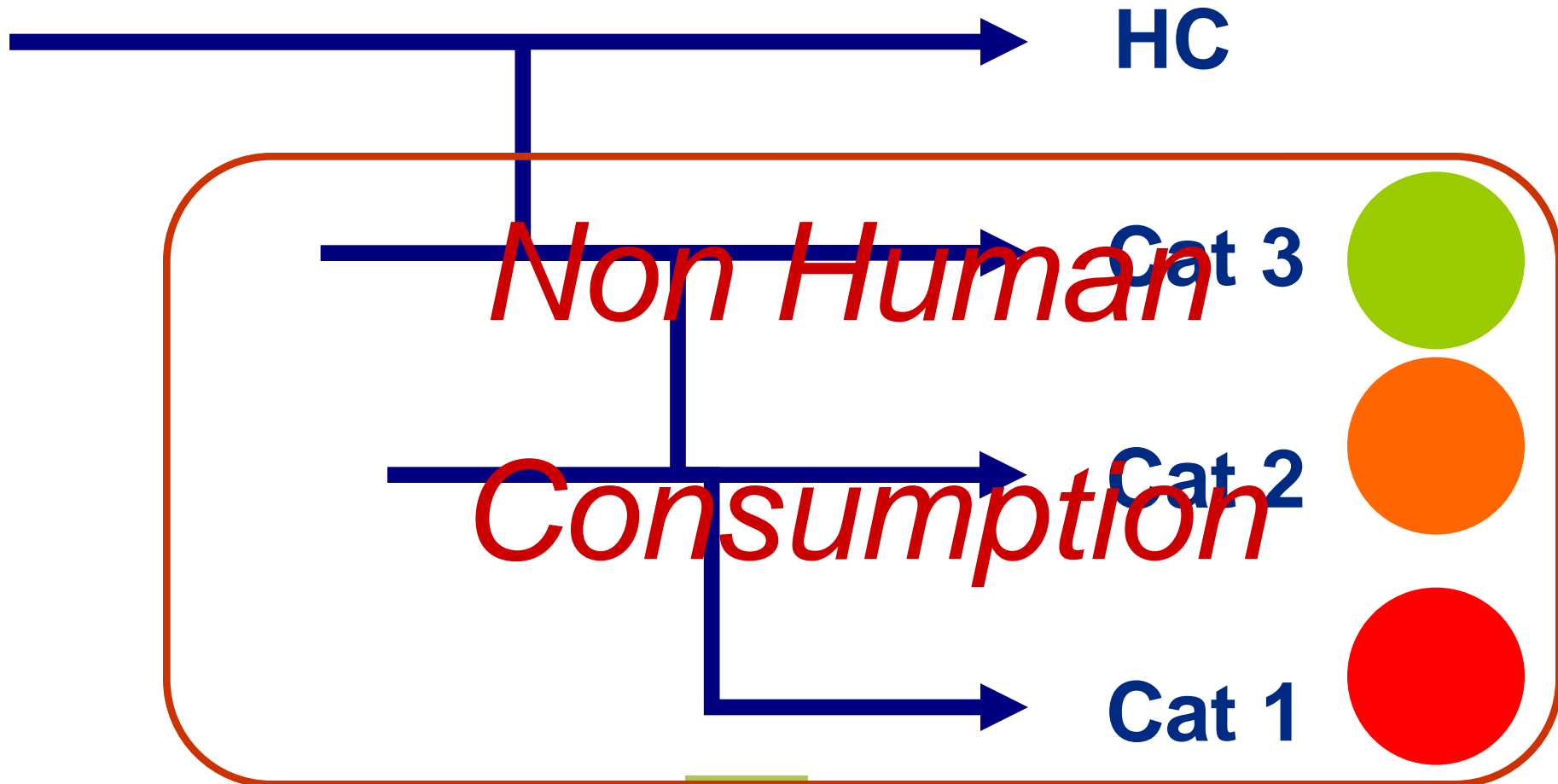
RO

Romania



European  
Commission

# Categories of ABP





# Hazards in each category

## Category 1

Risk of prions

Risk of banned products or contamination

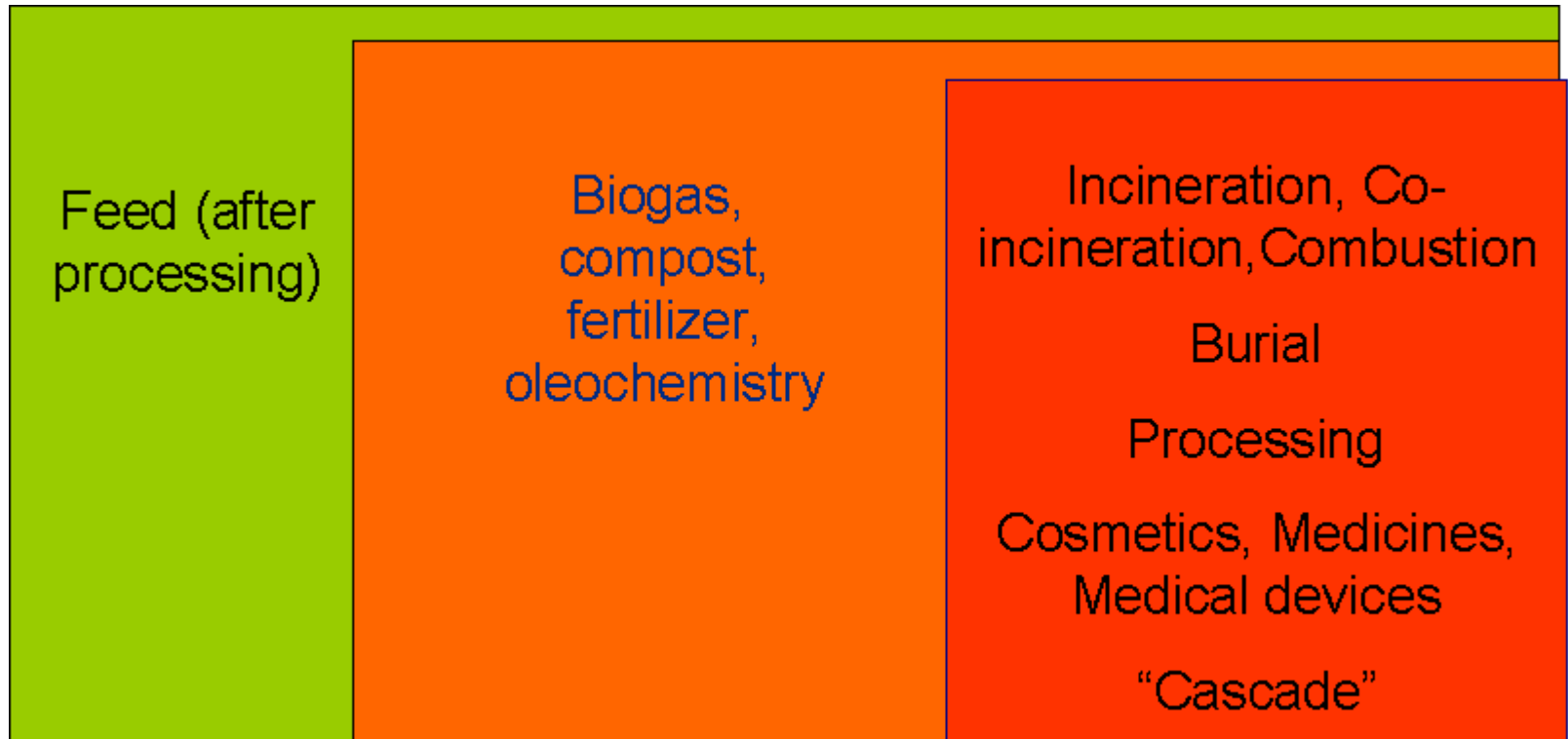
## Category 2

- Microbiological risk
- Residues of medicines

## Category 3

- Origin of healthy animals

# Most frequently used authorized destinations



# Some other destinations

- Special feeding purposes
- For exhibitions, artistic activities, diagnostic, educational or research purposes
- Trade samples & display items
- Surgical intervention at farm disposal
- Biodynamic preparations
- Crisis measures
- ...

# Ban for feeding

## Cannibalism ban

- Terrestrial: PAP species X to species X
- PAP of farmed fish species Y to farmed fish species Y

## Catering waste ban

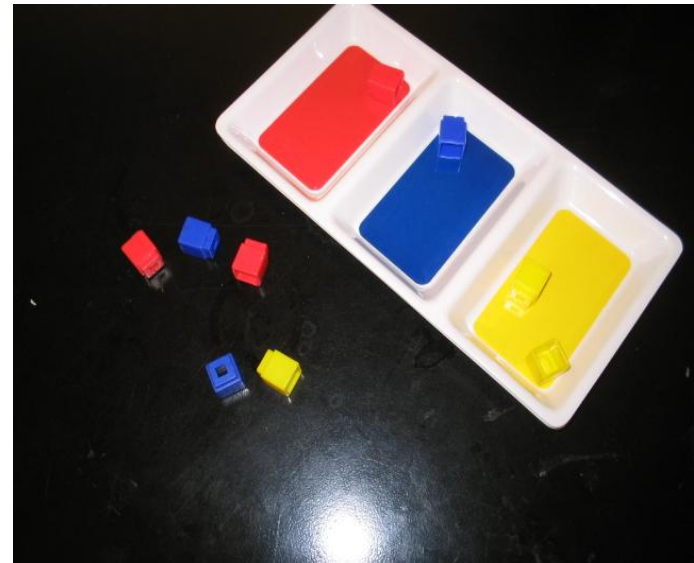
- To farmed animals
- Also derived from catering waste

## 21 days waiting period for OF/SI

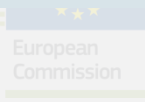
- Access to pasture land
- Harvest feed materials

# 1 sentence summary

Identify the risk of the material &  
send it to an appropriate  
destination



# Prepare to vote; keep your phone ready!



- Internet 1
- 2

TXT

*The text on this slide will instruct your audience on how to vote. This text will only appear once you start a free or a credit session.*

*Please note that the text and appearance of this slide (font, size, colour, etc.) cannot be changed.*

- Twitter 1
- 2

Voting is anonymous

Do all category 1 material need to be stained with a dye?

A. *Yes*

B. *No*

C. *Only certain fractions of category 1 materials*

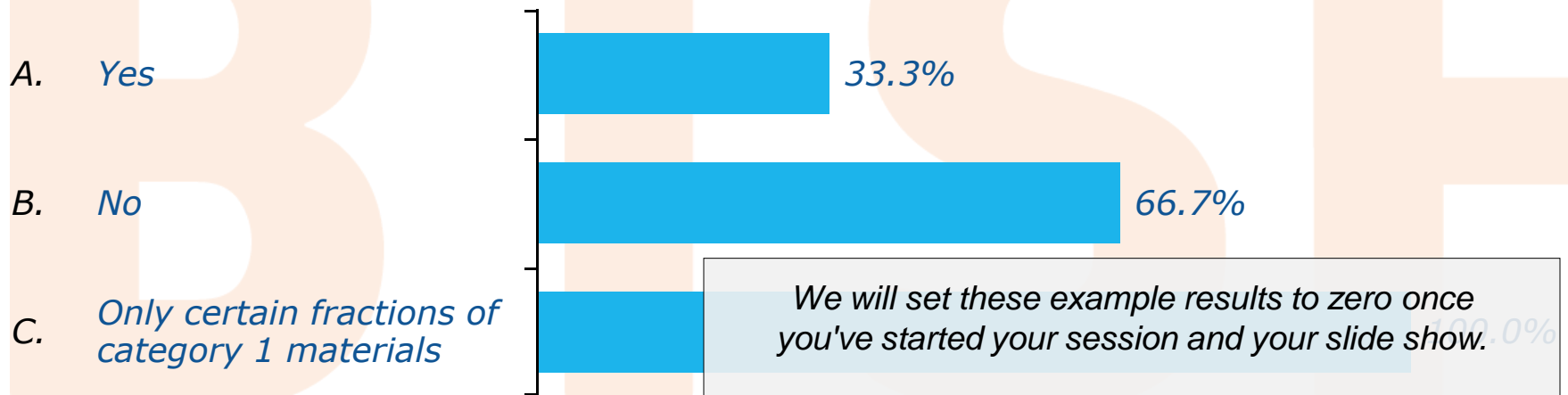
# votes: 0

 Closed

Internet  
TXT  
Twitter

This text box will be used to describe the different message sending methods. The applicable explanations will be inserted after you have started a session. It is possible to move, resize and modify the appearance of this text box.

# Do all category 1 material need to be stained with a dye?



*We will set these example results to zero once you've started your session and your slide show.*

*In the meantime, feel free to change the looks of your results (e.g. the colors).*

Closed

**Internet  
TXT  
Twitter**

This text box will be used to describe the different message sending methods. The applicable explanations will be inserted after you have started a session. It is possible to move, resize and modify the appearance of this text box.





European  
Commission

# BTSF Feed Ban

# Feedban legislation

## Regulation 999/2001

- Article 7 & annex IV

## Works together with ABPR

- What? 999/2001
- How? 1069/2009



European  
Commission

# Feed ban

Title "animal feeding", what with  
OF/SI?

Is protein ban

- Fat?
- di-/tricalcium phosphate?

	Farmed animals (other than Fur animals)			Pets & fur animals
	Ruminants	Non-ruminants	Fish	
Egg(prod)milk(prod)				
Non-rum gelatine				
Hydr. Proteins of non-rum or hides of rum				
Fish meal	Only in milk replacers for young rum		No aquacult in aquacult	
Di-tri calcium phosphate				
Bloodprod of non-rum				
Bloodmeal of non-rum				
PAP of non-rum				No cannibalism
Other				No cannibalism

# Insect are hot item in feed

- Still banned
- Why? Are PAP of non-ruminants not authorized for aquafeed?

# The feed ban is more than just “what can I give”

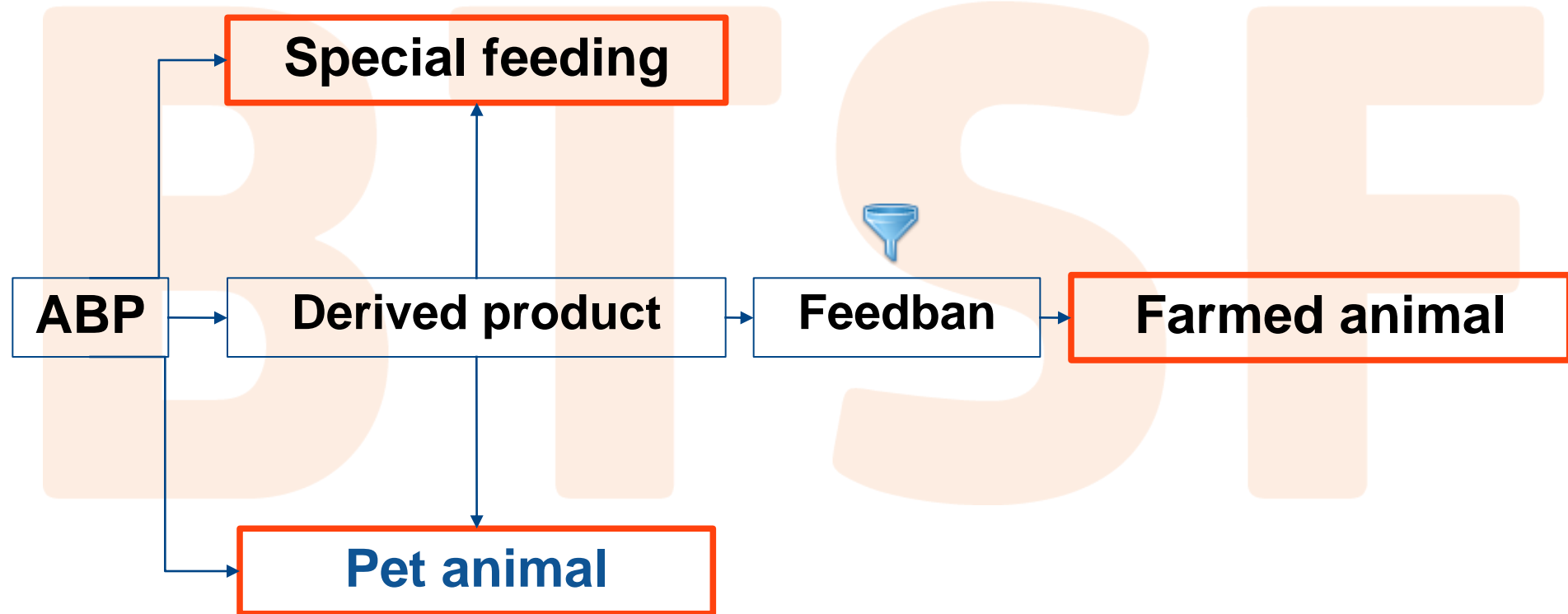
- Avoidance cross-contamination
- Pure raw materials
- Import/export (also OF/SI)
- Use on farms



European  
Commission

# 3 feeding options

# Flowchart Feeding ABP





# Can I use rendered pig fat in feed for pigs?

- A. *Yes*
- B. *Yes but only for pet pigs*
- C. *No*

# votes: 0

 Closed

**Internet  
TXT  
Twitter**

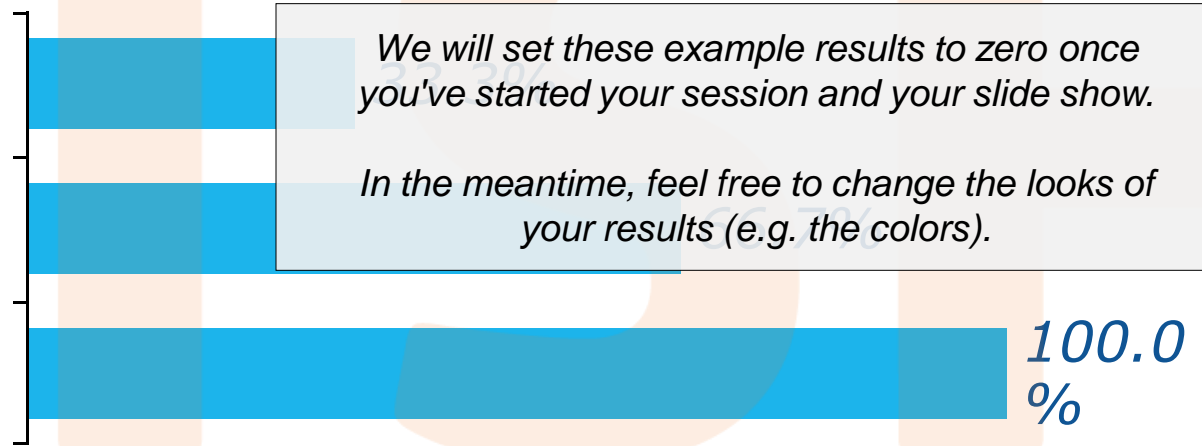
This text box will be used to describe the different message sending methods. The applicable explanations will be inserted after you have started a session. It is possible to move, resize and modify the appearance of this text box.

# Can I use rendered pig fat in feed for pigs?

A. Yes

B. Yes but only for pet pigs

C. No



● Closed

Internet  
TXT  
Twitter

This text box will be used to describe the different message sending methods. The applicable explanations will be inserted after you have started a session. It is possible to move, resize and modify the appearance of this text box.



European  
Commission

Thank you

*Questions?*



**JVL**  
CONSULTING



*JVL Consulting s.a.  
Rue Matagne 15  
B-5020 Vedrin  
Belgium*

Website: <http://btsf.euroconsultants.be>

## **Better Training for Safer Food BTSF**

*European Commission  
Consumers, Health and Food Executive Agency  
DRB A3/042  
L-2920 Luxembourg*