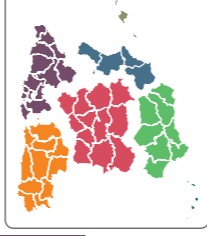


DIPLOMA DE

NATURE TRAIL MUNTANYES DE PRADES



Guide to the
Nature Trails
of Spain



SECTOR
NORTHEASTERN PENINSULAR



MUNTANYES DE PRADES, NATURE WINDOWS LOOKING OVER THE LANDSCAPE

This trail allows you to discover the spectacular surroundings of the charming municipality of Prades, running through Mediterranean woodlands with a great variety of species and state of preservation. Trail users will enjoy beautiful panoramic views of the surroundings, and, on clear days, you can catch a glimpse of the Mediterranean Sea and the Pyrenees. This municipality is also known as Vila Vermella (red town) because of the reddish sandstone that is characteristic of the emblematic buildings of the town. The trail has a 27-kilometre-long main route and 3 alternative branches: the Serra del Bosc Trail, hardly less than 4 kilometers long; the dels Pics Trail with approximately 2.5 kilometers of walking track; and the Vell de Montblanc Trail, some 2 kilometers long.



SECTOR NORTHEASTERN PENINSULAR NATURE TRAIL MUNTANYES DE PRADES

The route begins at *Carrer de Sant Roc*, which is located very close to the creu de terme i el portal that is part of the architectural ensemble of the locality of Prades.

MUNTANYES DE PRADES MAIN ROUTE

1. The main trail, once you have barely walked the first three hundred meters, becomes a sloping path full of sharp turns after crossing a bridge over the *Riu del Pla*. After getting past the Hermitage of *Sant Antoni*, the trail continues until it reaches the Hermitage of *Sant Roc*, the smallest hermitage in Prades, which gives the name to the hill where it is located.
2. From the hermitage of *Sant Roc* onwards, the trail becomes a path, but only for a few meters, because it goes back to the trail again until it reaches the recreational area of the *Mare de Deu de l'Abelleria*, located some meters away from the *Font l'Angel* and from the hermitage of the *Mare de Deu de l'Abelleria*, from where you can admire the municipality of Capafonts. Starting at a small hydraulic structure, the trail becomes a path and starts winding in a steep, but short, stony slope.
3. Following the main trail, on the left side, there is a branch going towards the rock of Gringol and the ice well. Coming back from this way and going back to the trail, you will pass the ruins of the *Covaden Pere*. Nearly kilometer 9, the trail turns left, and some 250 meters further on, you will find the crossroads leading to *Tossal de la Batxasana*: a steady ascending 500-metre-long

branch. Coming back to the crossroads where this branch starts, the route continues descending until the *Font de la mina de l'Obis*, and a bit further until it reaches a water pond.

4. The trail continues until it reaches the river Prades. Afterwards, the route plunges into a mixed forest mass with scot pines, downy oaks, hollies, yew trees, etc., until the ascent towards the first viewpoints of *Pla de la Guardia*, where you can enjoy a stunning view of the *Serra de Montsant* Natural Park. The trail continues descending until it reaches the *Font Cap Pla*, passing the lime kiln.

5. Once you are walking towards Prades, you will find the *Perronner del Cisterer*, a pear tree classified as monumental tree due to its huge dimensions. In Prades, you can behold a beautiful architectural ensemble consisting of a Romanesque bridge, the church of Saint Mary, the arcade of the square and the Renaissance fountain where this nature trail finds its end.

CAMI SERRA DEL BOSC

(OR CAMI DELS QUATRE TERMES)

6. The branch begins between kilometers 6 and 7, where the *Pou de Gal del Dinerat* is located. This path crosses the main route. A great part of this stretch coincides with the GR-171 path, so its signposts will be of great help to follow the route correctly. The ascent concludes

in *Mola d'Estat*, a spot with stunning views. The trail then follows the path that widens until it reaches *Taula del Quatre Batlles* (table of the four mayors). This spot indicates the place where four municipal districts meet: Mont-ral, Prades, Vinboof and Rojals.

CAMI DELS PICS TRAIL

7. The *Camí dels Pics* branch starts at the hermitage of *Sant Roc* and goes uphill through a very wide track. The trail keeps going up passing through conifer and leafy mixed woodlands, until it connects with the main route of the *Muntanyes de Prades* nature trail.

CAMI VELL DE MONTBLANC TRAIL

8. The *Camí Vell de Montblanc* branch starts at the Creu de Montblanc. If you leave the town of Prades behind, among hazelnut trees and housings, plunging into the forest mass, you will get to a recreational area. The trail continues uphill leaving a scot pine grove and Pyrenean oaks on the right hand. The trail ends when it meets the *Camí del Pics* branch.



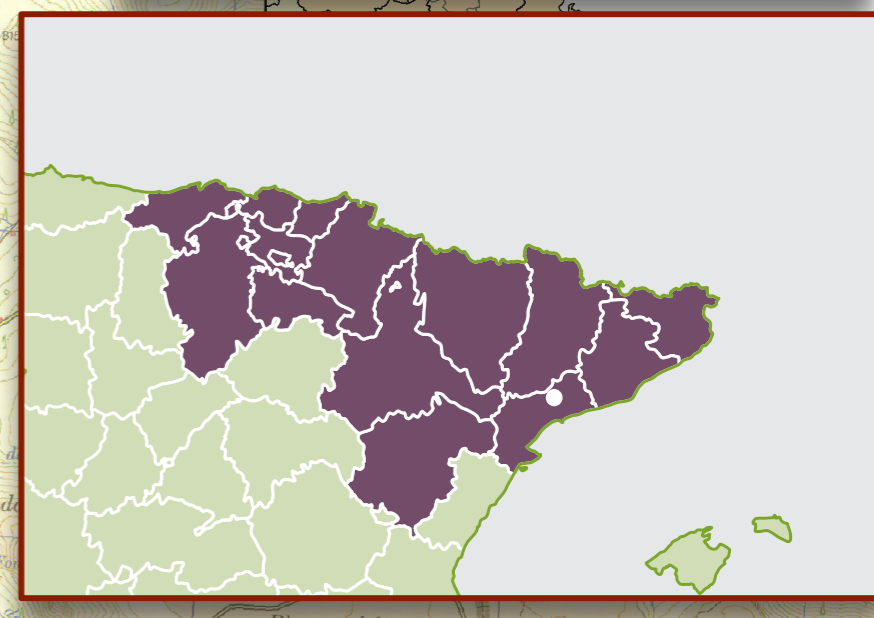
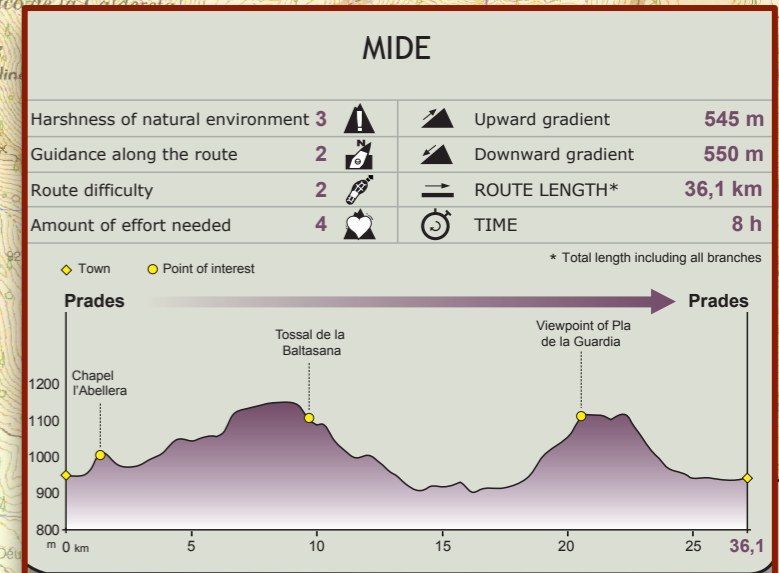
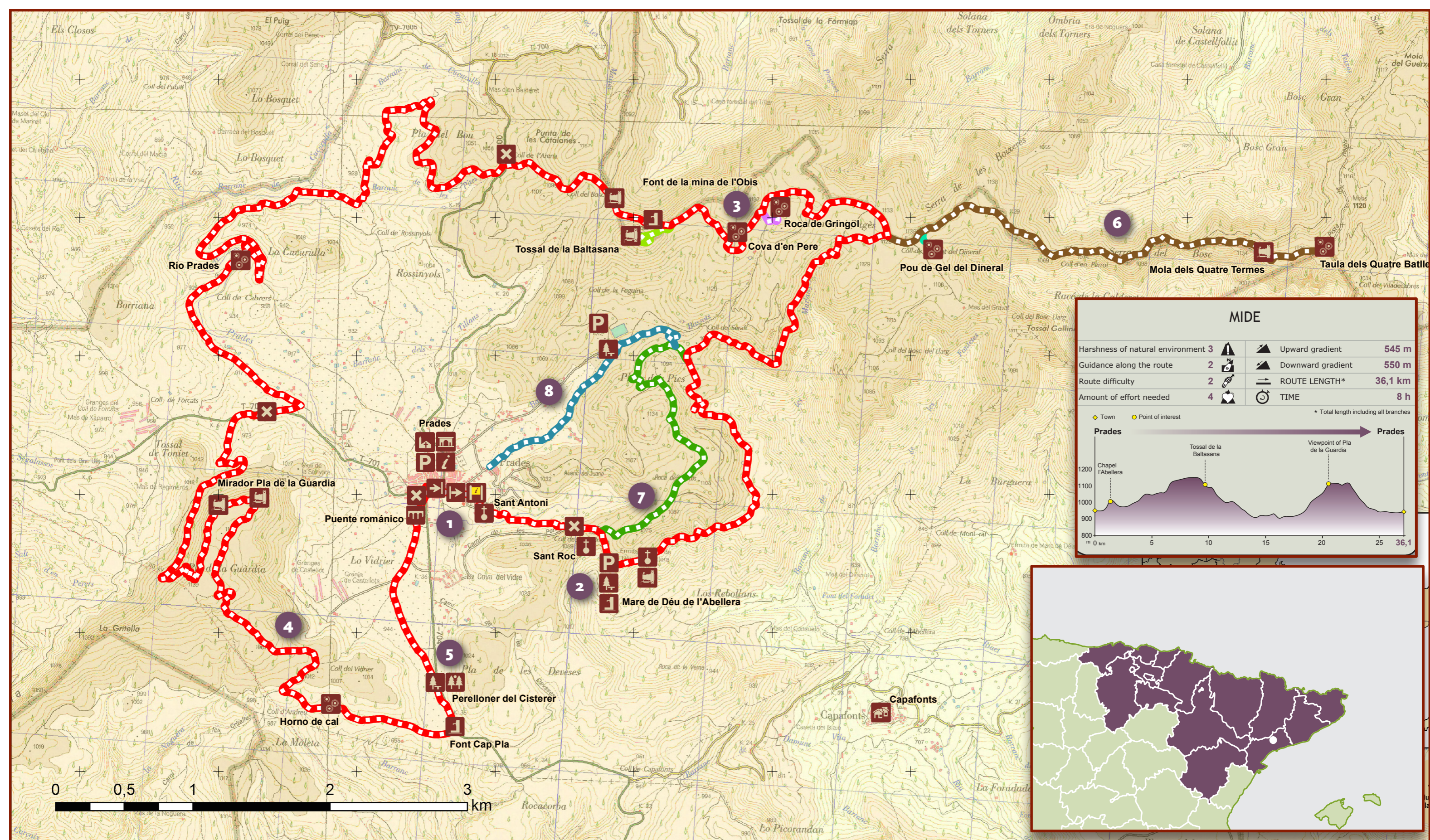
Capafonts view



Hermitage of Sant Antoni



Whitish rock formations caused by erosion



SECTOR
NORTHEASTERN PENINSULAR



NATURE TRAIL MUNTANYES DE PRADES

- Starting point
- End of trail
- Information panel
- Rest area
- Religious building
- Junction
- Shrine
- Fountain
- Other sights of interest
- Bridge
- Monument
- Information
- Viewpoint
- Parking lot
- Feature of environmental interest
- Town